

FACTORY-ART gallery

Mommensenstraße, 27 charlottenburg 10629 BERLIN

+49.(0)30.31809794 factory-art.com info@factory-art.com

Beatrice Crastini

b. 1962 in Trieste, Italy

Living and working between Trieste (Italy) and Berlin (Germany)

Selected works

"Glass Wind" 2009 / 2010

Starting from the sentence "in the electric technology's regime, the duty of the man becomes that to learn and to know; all the forms of wealth derive from the move of informations" by M. McLuhan, the project wants to underline the passage from the media the television that doesn't create any news and it is a mean that comforts, consoles and confirmation the Beatrice Crastini's installation Glass Wind where in a old crt tv, there are forcedly collocated some Barbie's clothes to spread out. Throught the wind sound and the clothes on the move, we are predisposed to follow the scene, but the glass screen isolates us from the same scene and holds back us inactives.



FACTORY-ART gallery

Mommensenstraße, 27 charlottenburg 10629 BERLIN

+49.(0)30.31809794 factory-art.com info@factory-art.com

"How much time do you have?" 2009

The work presented by Beatrice Crastini raises attention about the enormous amount of time we suffer passively waiting: on the phone, watching TV, in the queue at the post office, bank, cashier of the supermarket ...

Empty time, time lost, time that does not return.

Thus, for this particular project, the artist represent the life itself by choosing old chairs, and them are been used as a single subject / protagonist in achieving photographic sequences within a day.

As with her other works, the artist chooses everyday objects so worn that are not noticed and put them to the center of the project to redeem itself from oblivion.

So it born the photographic work "24 hours" (2008) where the same subject sculpted from light was obsessively taken for a sequence of a lot of poses in 24 hours. In the series thus obtained, the main subject loses the identity at the expense of context because it is the passage of light with its inexorable change over time that captures the attention.

Still working on photographic sequences she has made short video with the music arranged herself.

"Burned Life (2008) is a video made in black and white with the atmosphere of the old film. The subject was placed in a bare and neutral space, only the light from a dormer window complaint over time creating the altelenante passage from day to night, from night to day in the eternal game ever sequencing.

"Ping Pong Life (2008) proposes small asynchronous sequences of steps of the historic manipulated computer game with the namesake. This video relates to the various steps that may happen during life and that you never know what does in its becoming.



FACTORY-ART gallery

Mommensenstraße, 27 charlottenburg 10629 BERLIN

+49.(0)30.31809794 factory-art.com info@factory-art.com

" 28 Days " 2008 / 2010

The cement (commonly Portland cement) is material that set and harden after being combined with water and it's a basic ingredient of concrete (the construction material consisting of cement, aggregate - gravel or sand - and water).

When water is mixed with Portland cement, the product hardens in a period of 28 days.

As ever the man hasn't time.

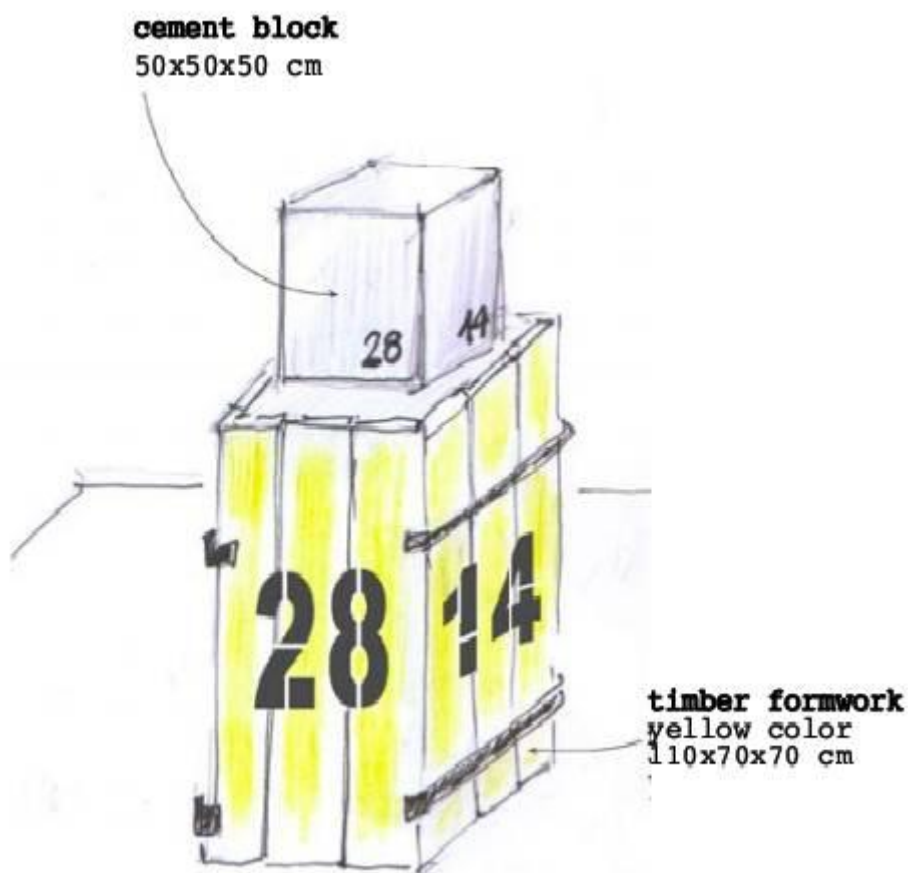
Adding chemical admixtures is possible cut in half the period of harden: 14 (and less) days.

The modern man doesn't accept the time's natural length, he wants to divide or multiply the time: with the microwave the cooking time is half, with the freezer the food storage is more long, with the Intel Centrino the data processing is fast, with the cosmetic the appearance is younger age.

By loudspeakers it's possible to listen the 28 days sound of regular cement during the period of harden and 14 days sound of fast cement during the period of harden.

To increase the discomfort the stand wall, the floor and the ceiling are gray, cement gray of course; and the humidity is increased with a humidifier.

We are invited to enter into cement's creation.



FACTORY-ART gallery

Mommsenstraße, 27 charlottenburg 10629 BERLIN

+49.(0)30.31809794 factory-art.com info@factory-art.com

"e io giaqui..." 2007

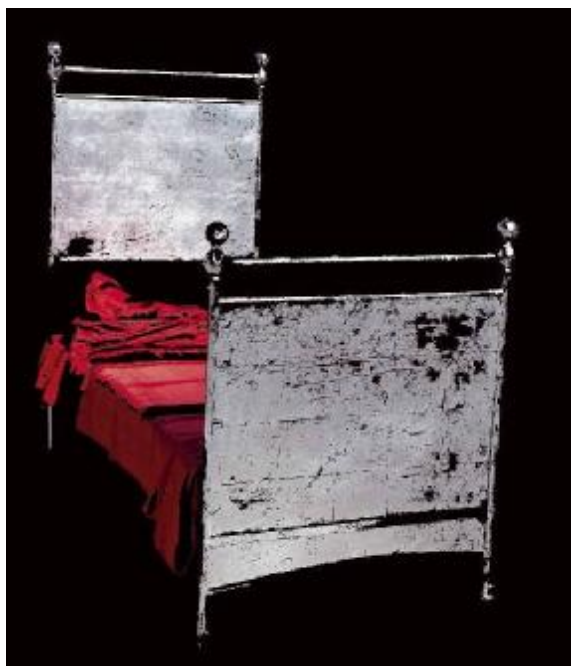
Prosegue la ricerca di Beatrice Crastini che in questo nuovo capitolo del suo lavoro introduce ulteriori elementi di lettura non necessariamente pittorici.

Nella sua personale ricerca di eliminazione del superfluo, sorta di pulizia che allontana dai pensieri automatici, focalizza come punto di riferimento per questo progetto espositivo l'attenzione su un antico letto. Il letto simbolo, più che oggetto, dei momenti cruciali della nostra vita: luogo di nascita, procreazione e morte. Il rimando al titolo del progetto stesso colloca l'uomo, soggetto dei momenti vissuti in tempi diversi, ma sovrapponibili in quando riconducibili allo stesso, davanti al suo eterno dualismo tra condizione animale e elevazione spirituale.

Oggetto che può venir interpretato come linea di confine tra vita e morte, coagulo del tempo a nostra disposizione.

L'artista ha poi innalzato il valore intrinseco del letto rivestendolo con una foglia d'argento giocando così con la luce che viene riflessa e che cambia nel suo trascorrere nel divenire del tempo.

A corona una galleria goticheggiante di figure solitarie, descritte con realismo figurativo minimalista da una sottile linea bianca, linea che ci permette di estrarle dagli sfondi nebbiosi e ipnotici, carichi di rosso sangue, figure appartenenti al nostro tempo moderno che ci spingono ad interrogarci sulla nostra incomunicabilità, sulla necessità di sviluppare le proprie capacità introspettive, ci raccontano delle storie che possono essere le nostre..



FACTORY-ART gallery

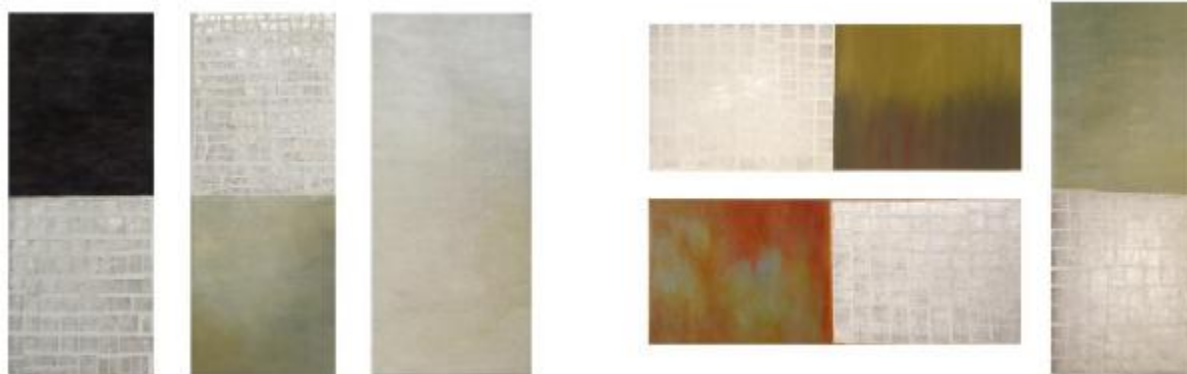
Mommsenstraße, 27 charlottenburg 10629 BERLIN

+49.(0)30.31809794 factory-art.com info@factory-art.com

"Assenza essenza" 2005 / 2006

Ogni opera è un trittico.

Ogni parte del trittico è un quadro indipendente che, di volta in volta, può essere ruotato a piacimento di 90/180/270° Ogni quadro rappresenta un "momento". Così più momenti legati assieme producono un ricordo. Nel tempo i ricordi mutano: si può perdere una sfumatura, un dettaglio, modificare un particolare.... si può anche dimenticare. Così si può interagire perché ruotando e/o spostando e/o togliendo una tessera, al pari del tempo che passa, l'immagine/ricordo risulterà smussata, modificata ... annullata



"Pensieri" 2004 / 2005



2004 92x97cm



2004 100x99cm

FACTORY-ART gallery

Mommensenstraße, 27_charlottenburg_10629_BERLIN

+49.(0)30.31809794 factory-art.com info@factory-art.com

"Window shopping" 2004 / 2005



2005 102x98cm



2004 95x99cm

"La Città" 2003 / 2006



2003 98x94cm

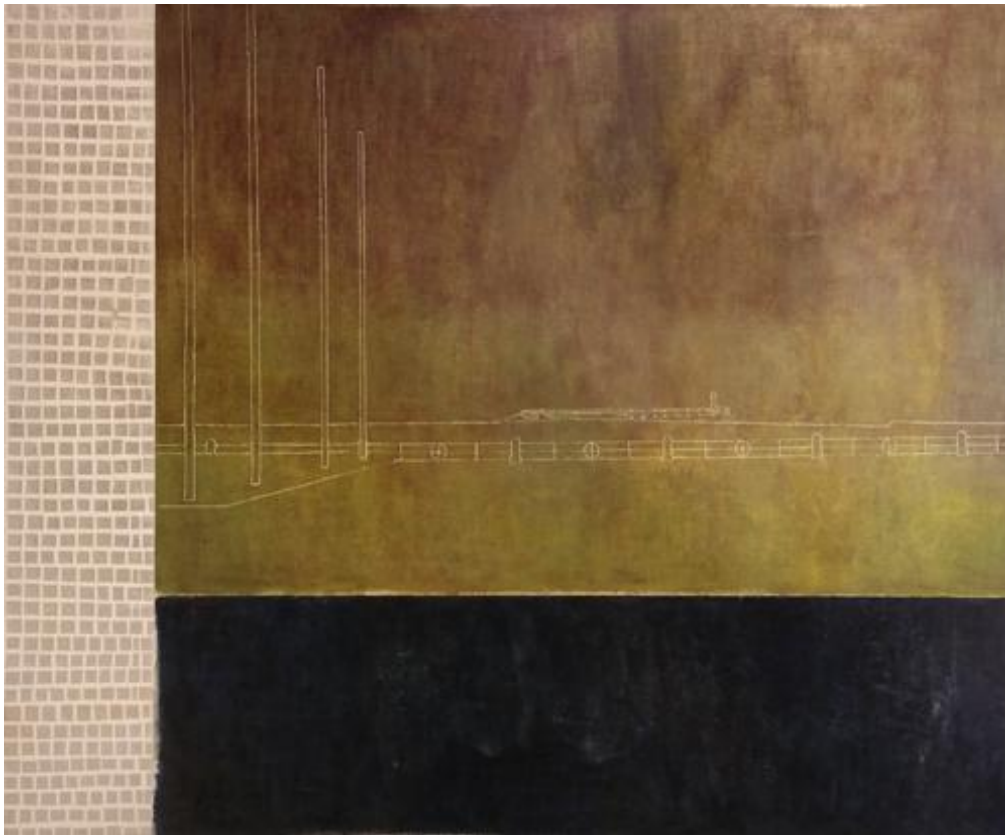


2003 98x85cm

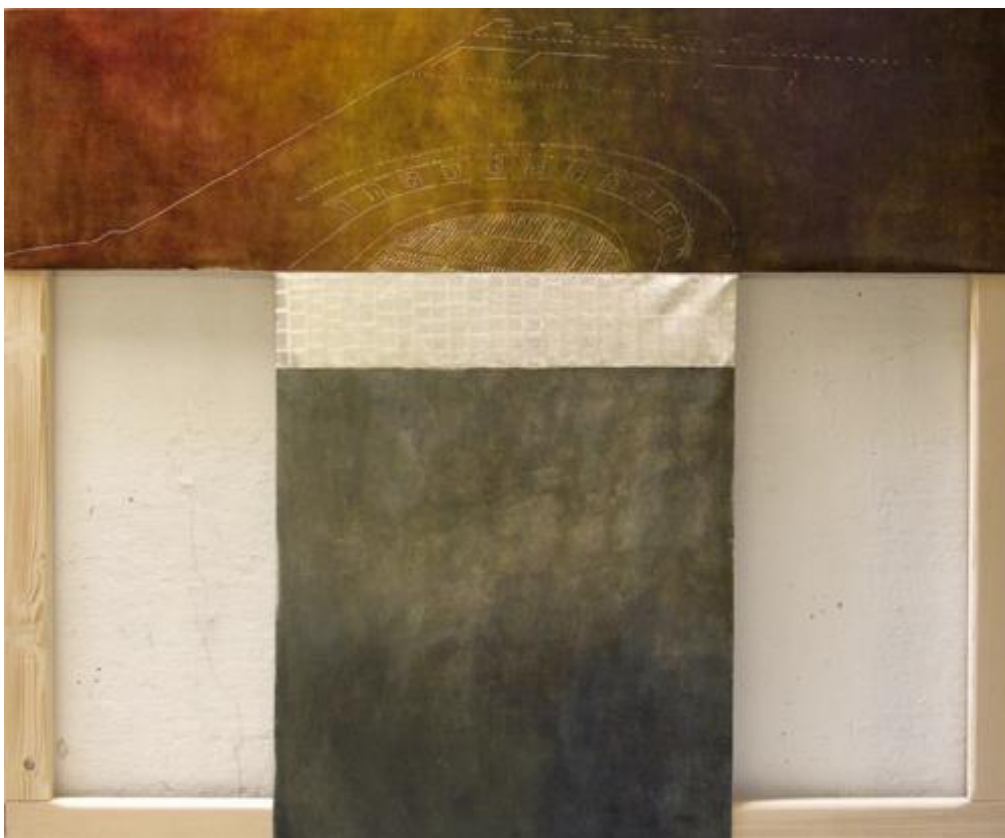
FACTORY-ART gallery

Mommensenstraße, 27_charlottenburg_10629_BERLIN

+49.(0)30.31809794 factory-art.com info@factory-art.com



2006 175x145cm



2006 175x145cm

FACTORY-ART gallery

Mommsenstraße, 27 charlottenburg 10629 BERLIN
+49.(0)30.31809794 factory-art.com info@factory-art.com

"Teste parlanti" 2004



2004 49x42x7cm each

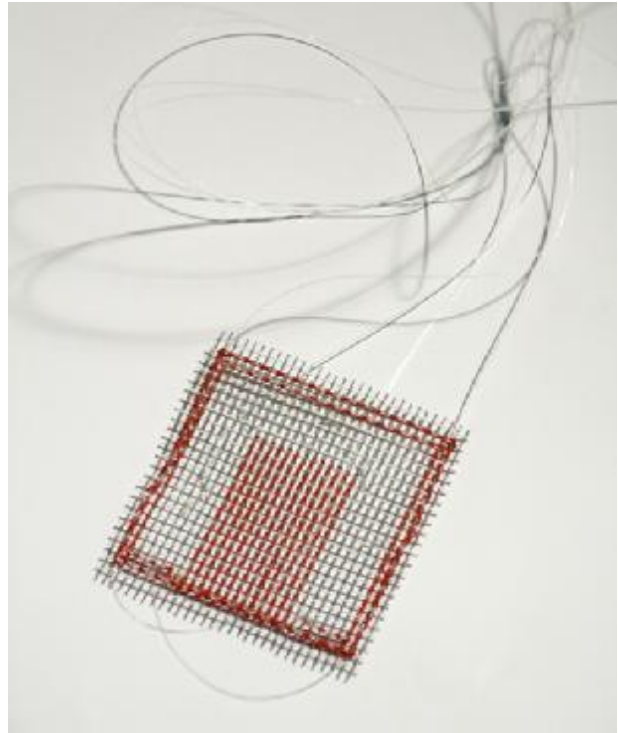
"Il Cilicio" 2004



FACTORY-ART gallery

Mommsenstraße, 27 charlottenburg 10629 BERLIN

+49.(0)30.31809794 factory-art.com info@factory-art.com



Beatrice Crastini - CV

1962 Trieste - Italy she lives and works in Trieste Italy and Berlin Germany

SOME LAST EXHIBITIONS

SOLO EXHIBITIONS

- 2009 How much time do you have?, gallery Factory-Art, Trieste_Italy
- 2007 Assenza/Essenza, gallery Verif ca 8+1, Venezia Mestre_Italy
- E io giacqui..., gallery Factory-Art contemporanea, Trieste_Italy
- Frammenti di tempo, Studio D'ARS, Milano_Italy
- 2006 Frammenti di tempo, gallery Factory-Art contemporanea, Trieste_Italy
- 2005 gallery Ponchielli art space, Trieste_Italy
- 1999 Emozioni, gallery Arthe, Gorizia_Italy
- 1998 Tensione, studio "l'Off.", Trieste_Italy

GROUP EXHIBITIONS

- 2009 Scope Basel
- Next Chicago
- Artfair in OpenCity Roma
- 2008 Dodai Galery Škuc,Ljubljana_Slovenja
- Liste 08 Berlin
- Kunstart 08
- ArtecontemporaneomodernaRoma
- 2007 exhibition of dvd Frammenti di tempo fondazione D'ARS Arte Fiera Bologna

FACTORY-ART LTD - Head Office & Accounting: Shoreham street. 311 – S24FA Sheffield UK

FACTORY-ART gallery

Mommsenstraße, 27 charlottenburg 10629 BERLIN

+49.(0)30.31809794 factory-art.com info@factory-art.com

- 2006 presence Sardegna Arte 2006 - Cagliari_Italy
- 2000 Fughe, Chiostro Biblioteca Statale Isontina, Gorizia_Italy
- 1999 Passaggi installation, studio "l'Off.", Trieste_Italy

PROJECT and other works

- 2008 curator Inside Myself group exhibition inside 4° edition festival Triestéfotogr
Giulia Corciolani, Francesca De Pieri, Stella Pellegrini
curator 1° appointment UNDER 30-NO BORDER NEW FAR WEST
Enzo Comin, Margareta Lekic, Alexandru Niculescu, Virginia Panichi, Stella
gallery Factory-Art contemporanea Trieste_Italy
- 2005 curator 2° edition Sisisaibel walk among studio and workshop of artists - T
curator 3° edition istantanee 03 exchange among workshop of artisans/art
Trieste/Udine Paola Fontana, Roberta De Bernardi/Gabriele Rosso
Tarcento/Castions BiMa/Stefano Jus
curator 2° edition istantanee02 exchange among artist's studio -
Trieste/Udine Fabiola Faidiga/Paolo Bazzocchi
Gorizia/Portogruaro Marco Bernot/Renzo Cevro Vukovic
- 2004 curator Sisisaibel walk among studio and workshop of artists - Trieste_Italy
curator istantanee01 exchange among artist's studio -
Trieste/Pordenone Beatrice Crastini/Guerrino Dirindin

PUBLICATIONS

- 2008 Wendy d'Ercole, Beatrice Crastini, Juliet n. 133
Martina Ganino-Corriere dell'Arte February 2007
- 2007 Frammenti di tempo, dvd
- 2006 Beatrice Crastini, catalogue 2000-2006
- 2005 Roberto Vidali, Beatrice Crastini e i cancelli suicidi, NTWK June 2005